

303.495.5006  
ceresgs.com

---



**CERES**  
GREENHOUSE SOLUTIONS®

# GREENHOUSE CATALOG





# CERES GREENHOUSE SOLUTIONS

## **GREENHOUSES**

---

### HIGHYIELD KITS

5,5m (BackYard Kits) \_\_\_\_\_ 4

6,4m \_\_\_\_\_ 5

9,6m \_\_\_\_\_ 6

MODULAR LAYOUTS \_\_\_\_\_ 7

BARN KITS \_\_\_\_\_ 8

---

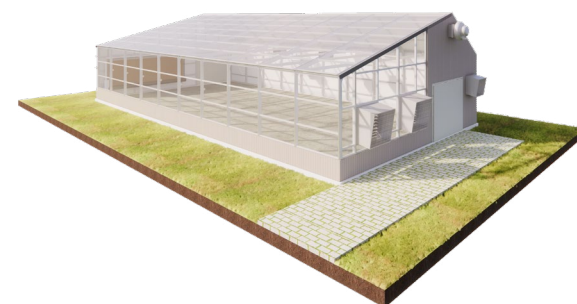
## **SYSTEMS & ADD ONS**

Vented & Sealed Systems \_\_\_\_\_ 12

List of Systems & Upgrades \_\_\_\_\_ 13

Color Availability \_\_\_\_\_ 14

GENERAL PROJECT STEPS \_\_\_\_\_ 15



# GREENHOUSES



## STAND ALONE

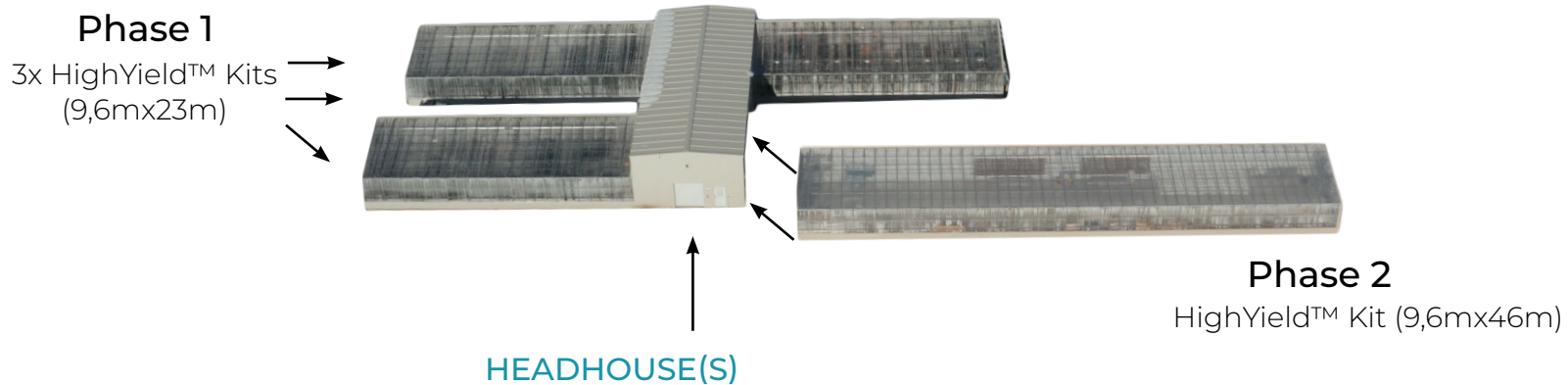
Greenhouses that “stand-alone” include our BackYard Kits, HighYield™ Kits and Barn Kits, and are available with, or without, a headhouse. These greenhouses are great for residential properties, schools, community gardens and smaller businesses and farms.

## MODULAR LAYOUTS

All of our “commercial facilities” begin with one (or more) HighYield™ kits and an attached headhouse. Modularity implies that greenhouses can continuously be built over time and in phases. The facility layout is tailored to client needs and site conditions.

Benefits include:

- Biosecurity
- Ability to stagger harvest schedule
- Precision control of individual grow environments
- Ease of expansion



Headhouses are non-glazed attached structures used for purposes such as processing, storage, cleaning, etc. Headhouses can be added to most Stand Alone and Modular Layouts.

# HIGHYIELD™ KITS

## 5,5M WIDTH (BACKYARD KIT)

Our best selling greenhouses. HighYield™ Kits can be arranged in various layouts, and connected with corridors and head-house(s). There is an option to add a headhouse on north side, or inline. For more information about headhouses and modular layouts see page 2.

Within our fleet of HighYield™ Kits, our smallest option and most popular “residential” solution (though not limited to residences), is our BackYard Kit (pictured below)



**Width:** 5,5m  
**Length:** Starting at 7m  
**Peak height:** 4m  
**Eave height:** 3m

*\*The BackYard Kit is available in additional lengths in 1m and 2m increments*

*\*\*Engineered to meet site specific snow and wind loads*

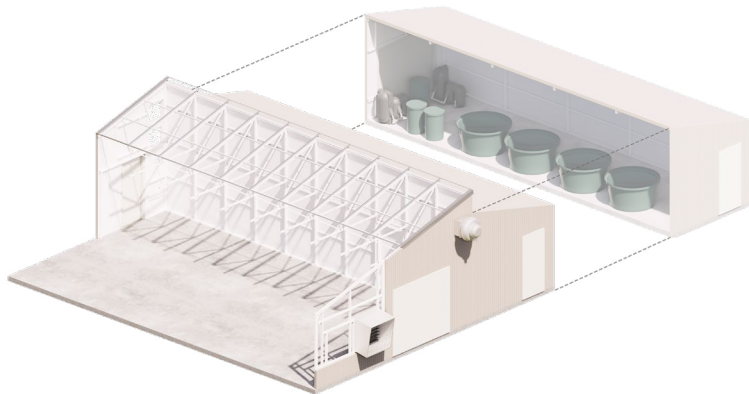


# 6,4M WIDTH



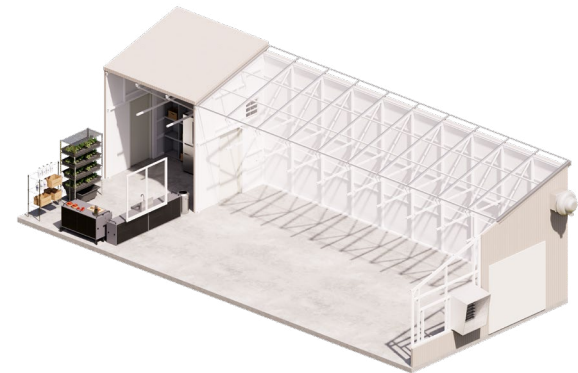
**Length:** Starting at 8m  
**Peak height:** 6m  
**Eave height:** 4m

## ATTACHED NORTH HEADHOUSE:



**Headhouse length:**  
can vary according to  
need

## INLINE HEADHOUSE:

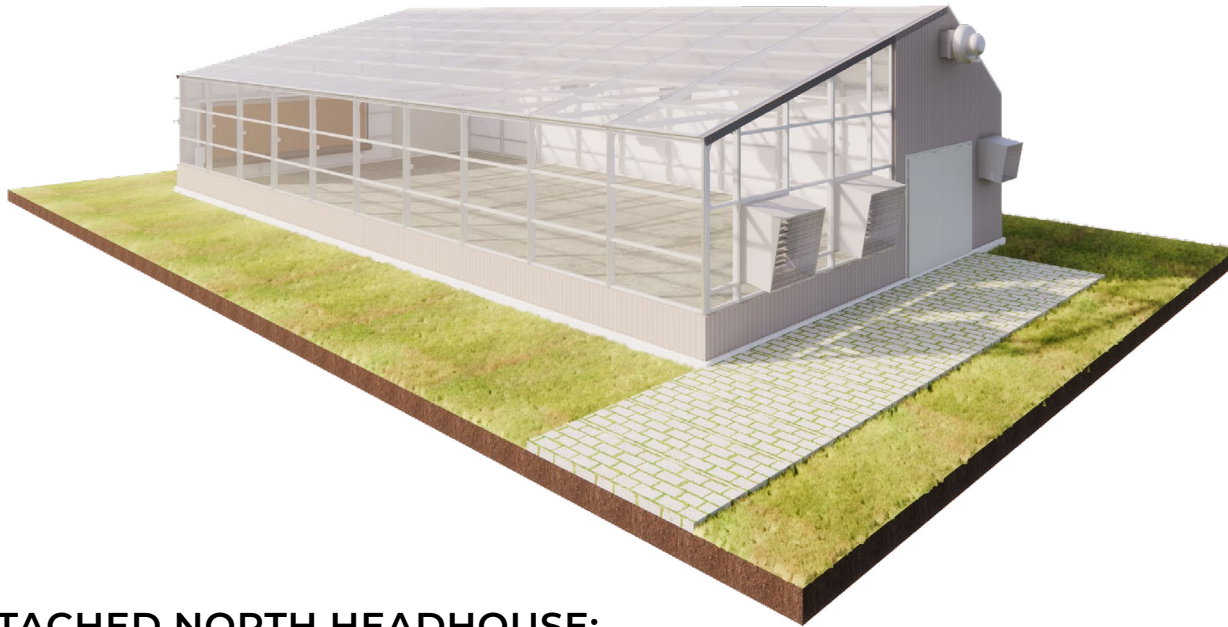


*\*Wind, snow, and equipment loads will determine the truss spacing and final length of the HighYield™ Kit.*

*\*\*Please consult with a Ceres representative for exact frame to frame dimensions*

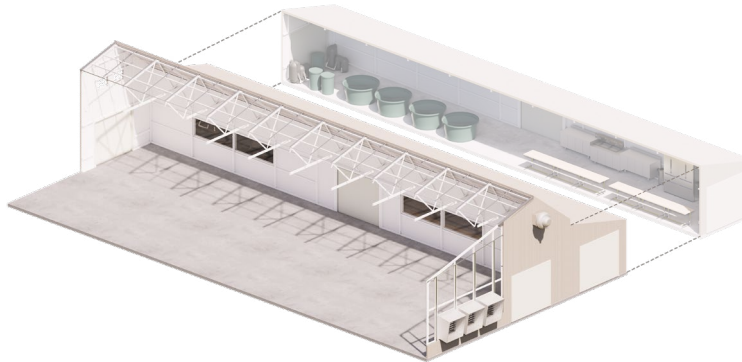


# 9,6M WIDTH



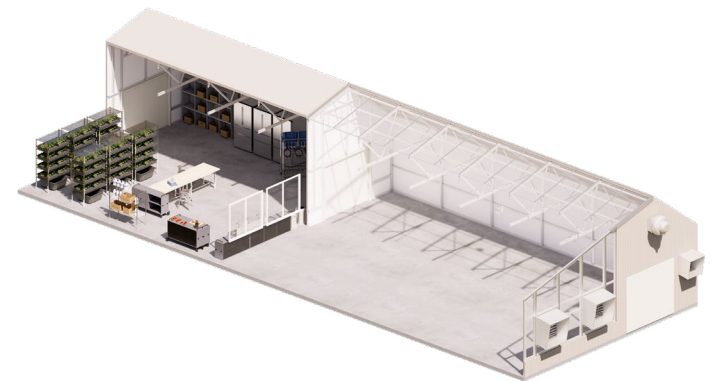
**Length:** Starting at 12m  
**Peak height:** 6m  
**Eave height:** 4m

## ATTACHED NORTH HEADHOUSE:



**Headhouse length:**  
can vary according to  
need

## INLINE HEADHOUSE:



*\*Wind, snow, and equipment loads will determine the truss spacing and final length of the HighYield™ Kit.  
\*\*Please consult with a Ceres representative for exact frame to frame dimensions*



# MODULAR LAYOUTS

---

Our Commercial Modular Facilities start with the structure of the HighYield™ Kit and feature different configurations of headhouse(s), corridors, and number of greenhouse units. These are typically for commercial or research operations.

## INLINE: NEPTUNE

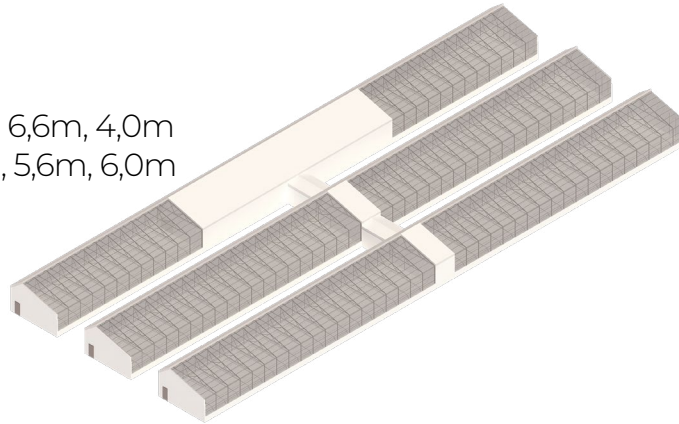
### Headhouse Dimensions:

**Width:** 9,6m

**Length:** Any

**Eave height:** 3,2m, 6,6m, 4,0m

**Peak height:** 5,4m, 5,6m, 6,0m



## HEADHOUSE CONNECTED: SATURN

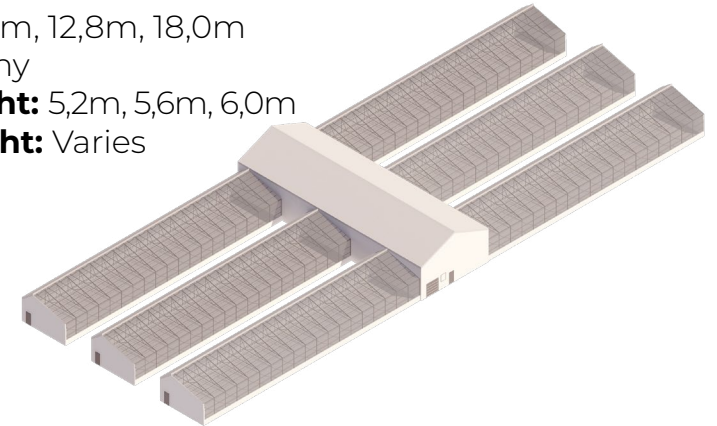
### Headhouse Dimensions:

**Width:** 9,6m, 12,8m, 18,0m

**Length:** Any

**Eave height:** 5,2m, 5,6m, 6,0m

**Peak height:** Varies



## CORRIDOR CONNECTED: JUPITER

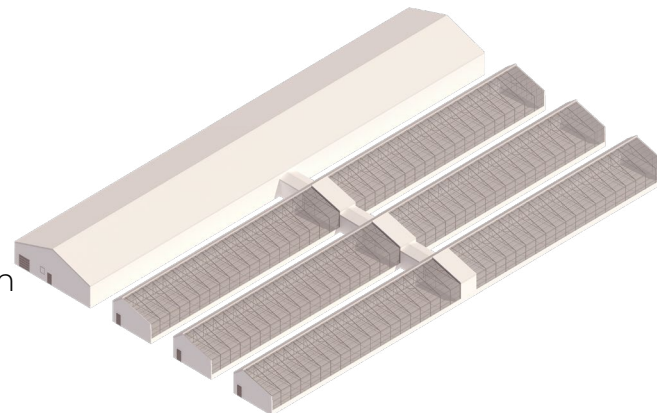
### Headhouse Dimensions:

**Width:** 9,6m, 12,8m, 18,0m

**Length:** Any

**Eave height:** 3,2m, 3,6m, 4,0m

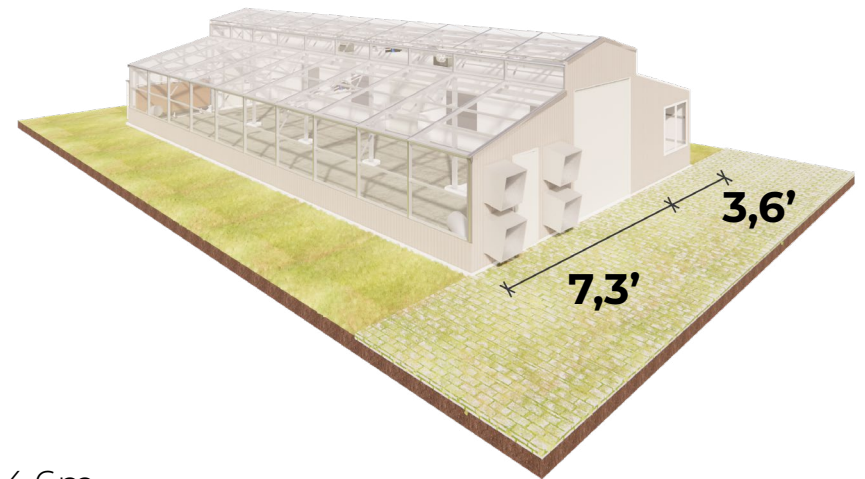
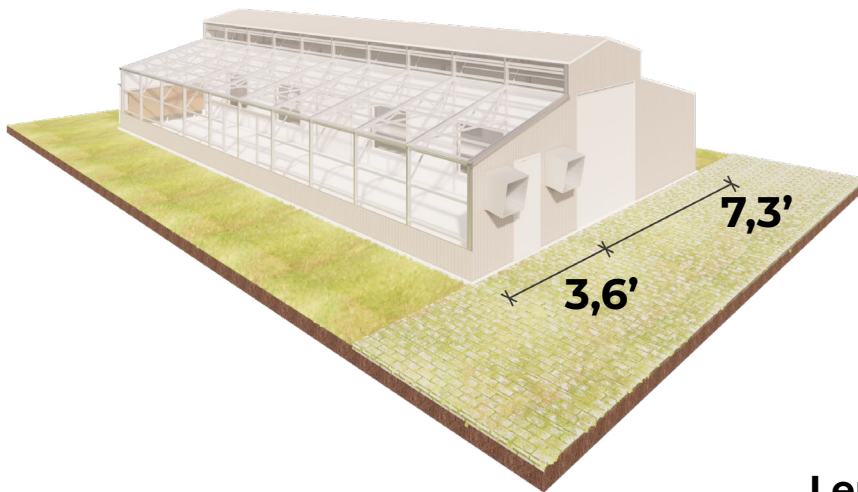
**Peak height:** Varies



# BARN KITS

---

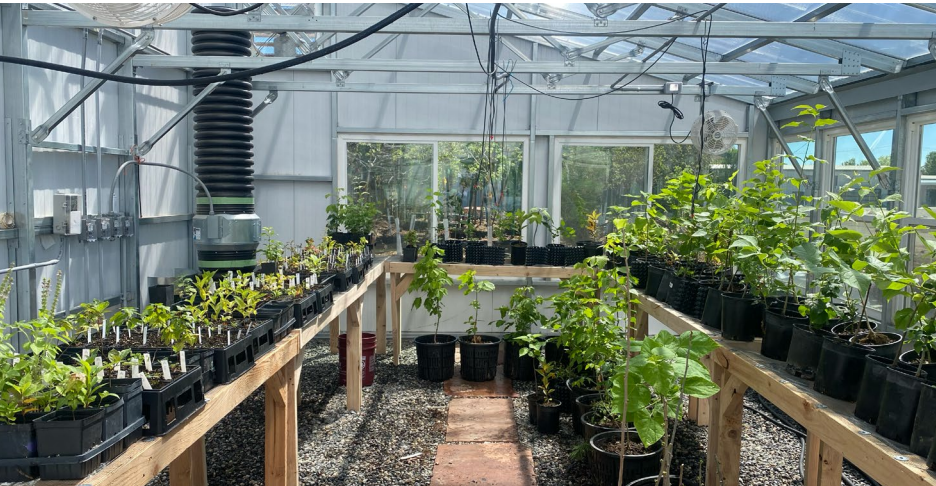
The Ceres Barn Kit has a built in partition between the greenhouse and barn space, allowing for convenient access to storage and processing areas. These kits differ from our others with their unique shape, and added garage doors. The greenhouse can be either 7,3 meters or 3,6 meters long, as pictured below.



**Length:** 11m, 14,6m  
**Peak height:** 4,4m  
**Low eave height:** 2,4m  
**High eave height:** 4m



# CASE STUDIES



## 5,5M WIDTH

This 5,5mx7m community BackYard Kit greenhouse, located in Longmont, CO, includes a Ceres GAHT® (ground to air heat transfer) system. This greenhouse shelters plant starts for neighboring public lands and parks as part of a native plant restoration initiative.

## 9,6M WIDTH

Greenshaus, Inc. is a commercial hydroponic lettuce growing operation in Ontario using Ceres' 9,6mx22m HighYield™ Kit and a GAHT® system for heating. Supplemental LED lighting and climate conditions are controlled by the SunSense™ automated controller.



## BARN KIT

Melcher Heart Flowers is a cut flower business, located in Wyoming. This client uses the greenhouse for both personal veggie production and to supplement their business. The attached barn space is used to store a tractor and other farming supplies. The greenhouse includes a GAHT® system, energy curtains, and a SunSense™ controller.





## COMMERCIAL MODULAR

As Omaha's premier botanical garden, Lauritzen Gardens was looking for a massive upgrade for its year-round production capabilities. This facility consists of four Ceres greenhouses, connected by corridors and a headhouse. The greenhouses are vented with insect screened intakes, fogging systems for evaporative cooling and humidity addition, and an automated shade system for cooling in summer and heat retention in winter. A SunSense™ controller for all four greenhouses allows for precision control. All of the greenhouses have polycarbonate roofs and the southern two greenhouses incorporate glass on the south walls for public viewing from the outside.



# SYSTEMS & ADD ONS

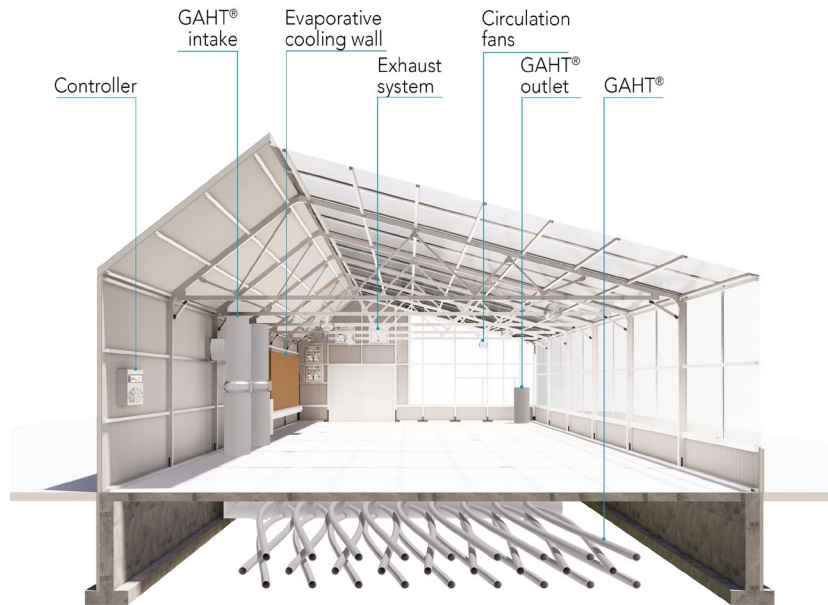
---



## ALL GREENHOUSES INCLUDE:

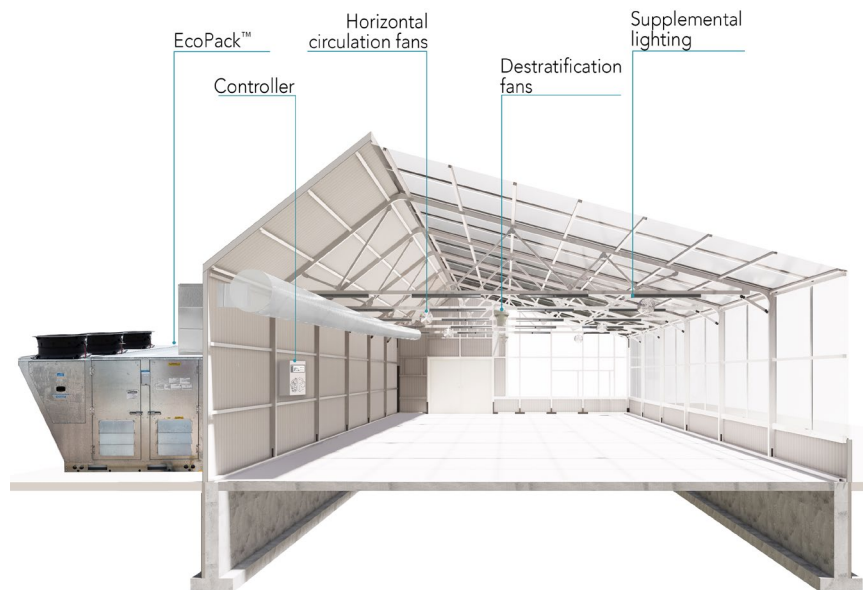
- Steel Framing
- Glazing
- Insulated Panels
- Trim
- Doors
- Exhaust System
- SunSense™ Automated Climate Controller
- Stamped Structural & Foundation Plans
- Construction Drawings
- Construction Support
- Windows (optional)
- Stamped MEP plans (optional)





## VENTED SYSTEM

A vented greenhouse is a good option when precision control over temperature and humidity is not necessary.



## SUNCHAMBER™ SYSTEM

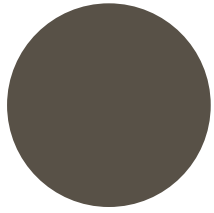
A sealed greenhouse offers precise and independent climate control of both temperature and humidity. This option allows for increased yields and greater biosecurity.

# SYSTEMS & UPGRADES

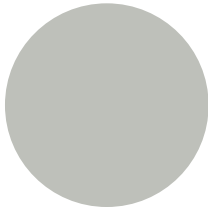


- Shade/energy curtain
- Light deprivation systems
- Heating & cooling systems
  - EcoPack™
  - GAHT®
  - Evaporative cooling
- Dehumidification
- High pressure fogging
- Supplemental lighting
- Water treatment
- Fertigation
- Grow systems
- Biosecurity
- Benches
- Air circulation
- Odor control

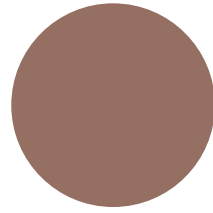
# COLOR AVAILABILITY



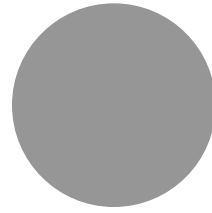
Medium Bronze



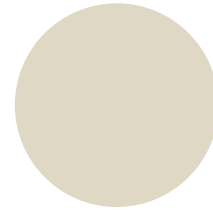
Light French



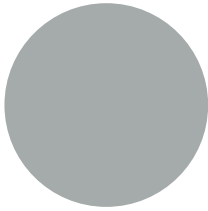
Reddened Earth



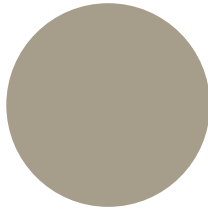
Tundra



Almond



Pearl Gray



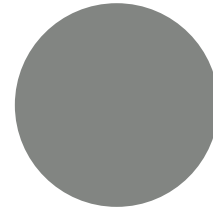
Surrey Beige



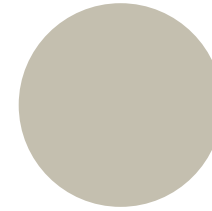
Warm White



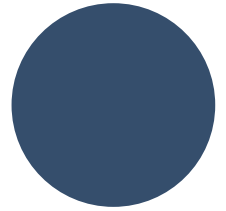
Regal White



Slate Gray



Sandstone



Royal Blue



Panel Color: Regal White  
Trim Color: Regal White



Panel Color: Slate Gray  
Trim Color: Slate Gray



Panel Color: Regal White  
Trim Color: Royal Blue



Panel Color: Pearl Gray  
Trim Color: Royal Blue



Panel Color: Royal Blue  
Trim Color: Regal White



Panel Color: Surrey Beige  
Trim Color: Sandstone

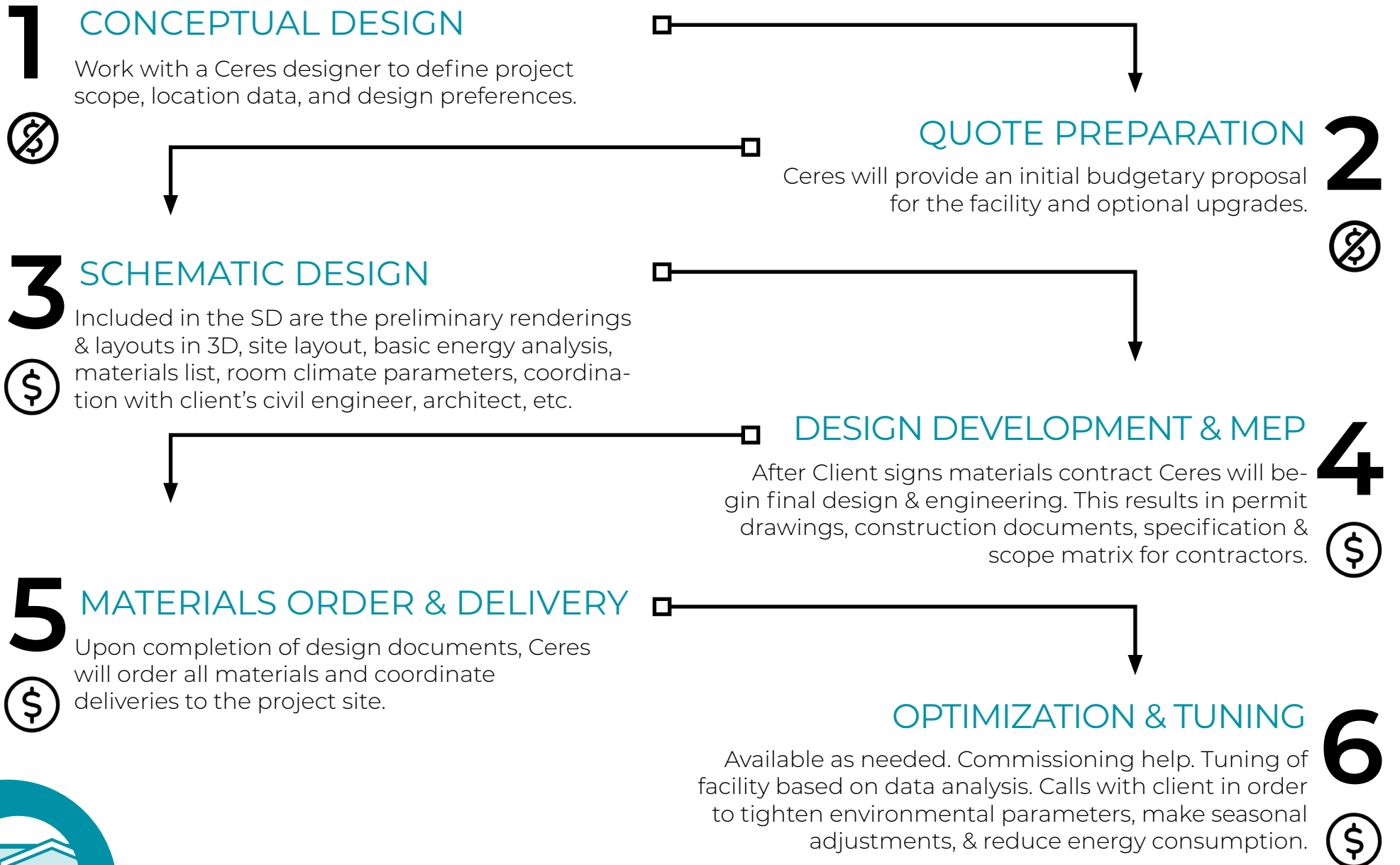


Panel Color: Pearl Gray  
Trim Color: Pearl Gray



Panel Color: Sandstone  
Trim Color: Sandstone

# GENERAL PROJECT STEPS:



# GREENHOUSE EXAMPLES



5,5mx13m BackYard Kit with 5,5mx3 Headhouse



11mx12,8m HighYield™ Kit



9,6mx11m HighYield™ Kit with Inline Headhouse



9,6mx22m HighYield™ Kit



9,6mx24m HighYield™ Kit with Attached North Headhouse



Two 9,6mx46m HighYield™ Kits